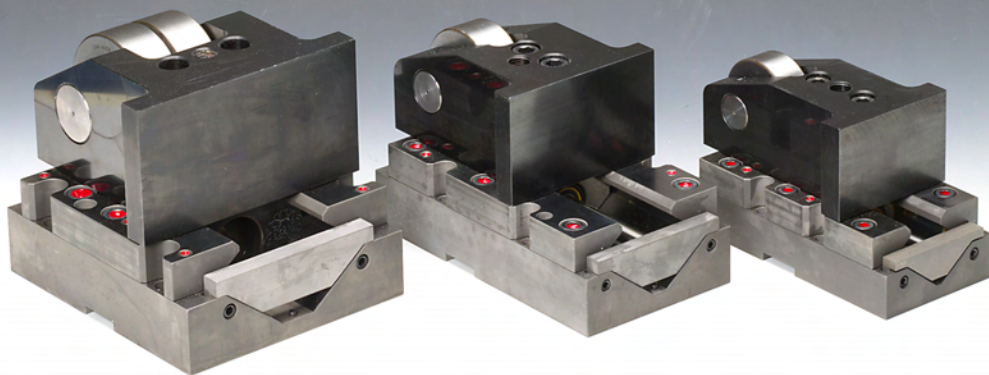


KALLER[®]



Roller Cam RC2, RCP2

Volvo standard

Kaller is the Volvo standard for gas springs, hydraulic cams and roller cams. In the downloads here you find the Volvo part numbers for all Kaller parts that are Volvo standard.

- **GREEN**: Preference 1. The items that are "first choice" have the Volvo part numbers marked green.
- **YELLOW**: Preference 2. The items with yellow Volvo part numbers can be used if the green marked alternative is impossible to use in the specific case.
- **UNCOLOURED**: The items with uncoloured Volvo part numbers must not be used for new design, only for replacement in old dies.

Items that are not provided with Volvo part numbers can be used after confirmation from Volvo: please contact glarss16@volvocars.com or your technical contact person at Volvo.

Roller Cam RC2, RCP2

The next generation of KALLER Roller Cam has been developed to meet the industry's increasing demands on standard cam units.

This new generation offers:

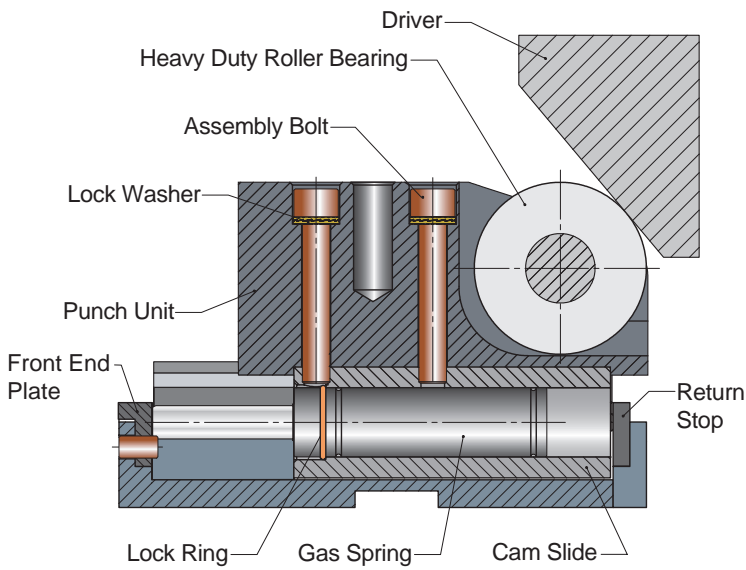
- High precision and maintenance free guiding allowing for more off center loading and upside-down installation,
- Long service life,
- Built in return stroke dampening,
- Easy punch attachment. For other type of application, please contact your local distributor or Strömsholmen AB

The KALLER Roller Cam is available for a maximum piercing force of 30 kN, 50 kN and 150 kN.

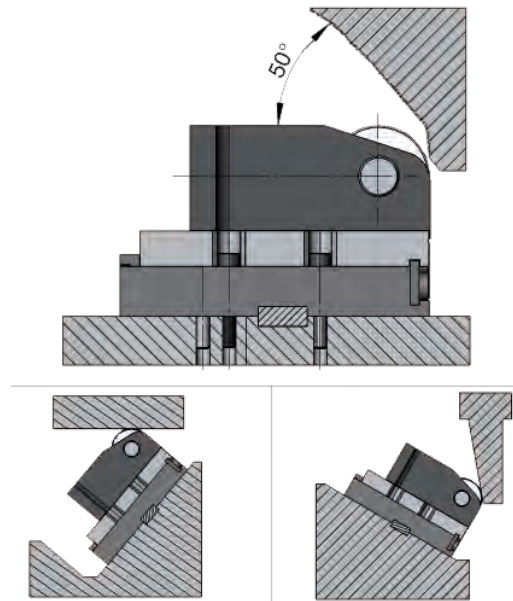
The driver itself is to be designed by the user to give the required displacement profile.

The contact surface on the driver should be hardened to approximately 58-60 HRC.

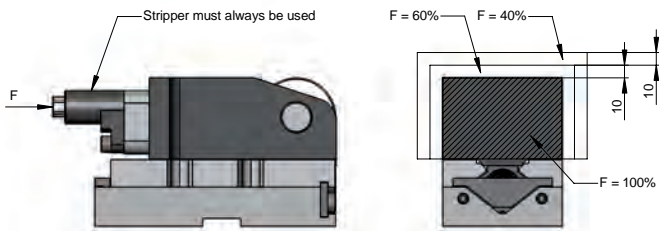
Design



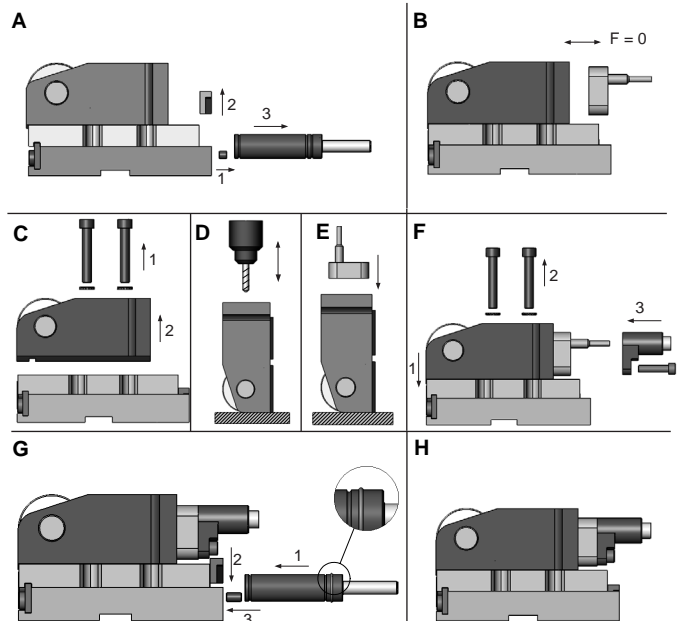
Mounting options



Punch location



Punch attachment



Basic Information

Recommended max strokes/min 40 spm (at 20°C)

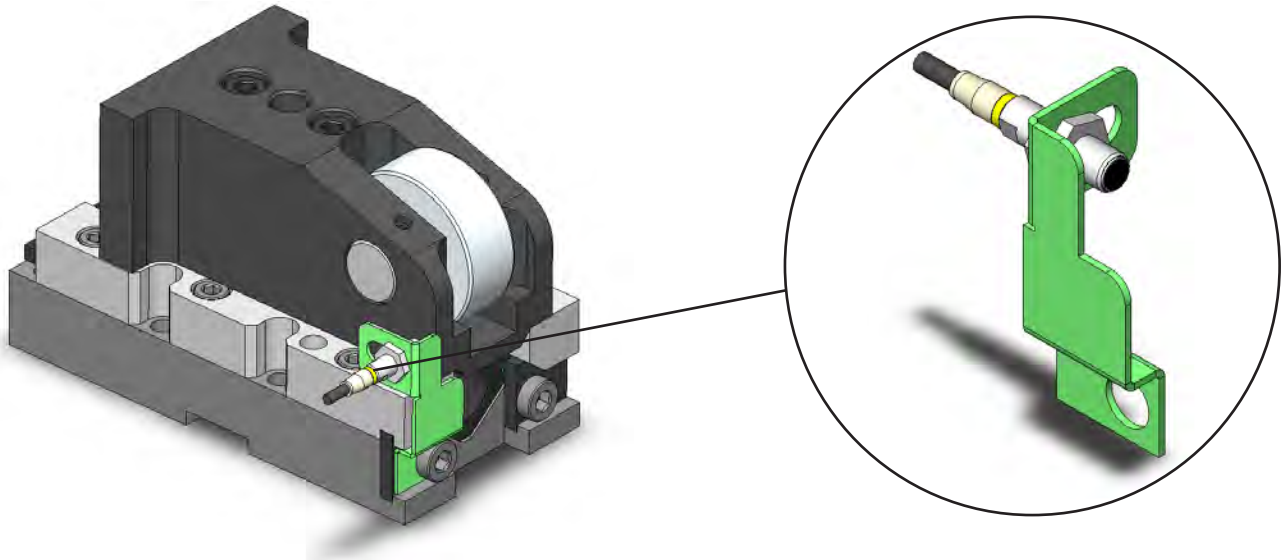
Max retur velocity 0.8 m/s

Max play at face of punch unit 0.02 mm

For information about max attachment weight, please contact your local distributor or Strömsholmen AB

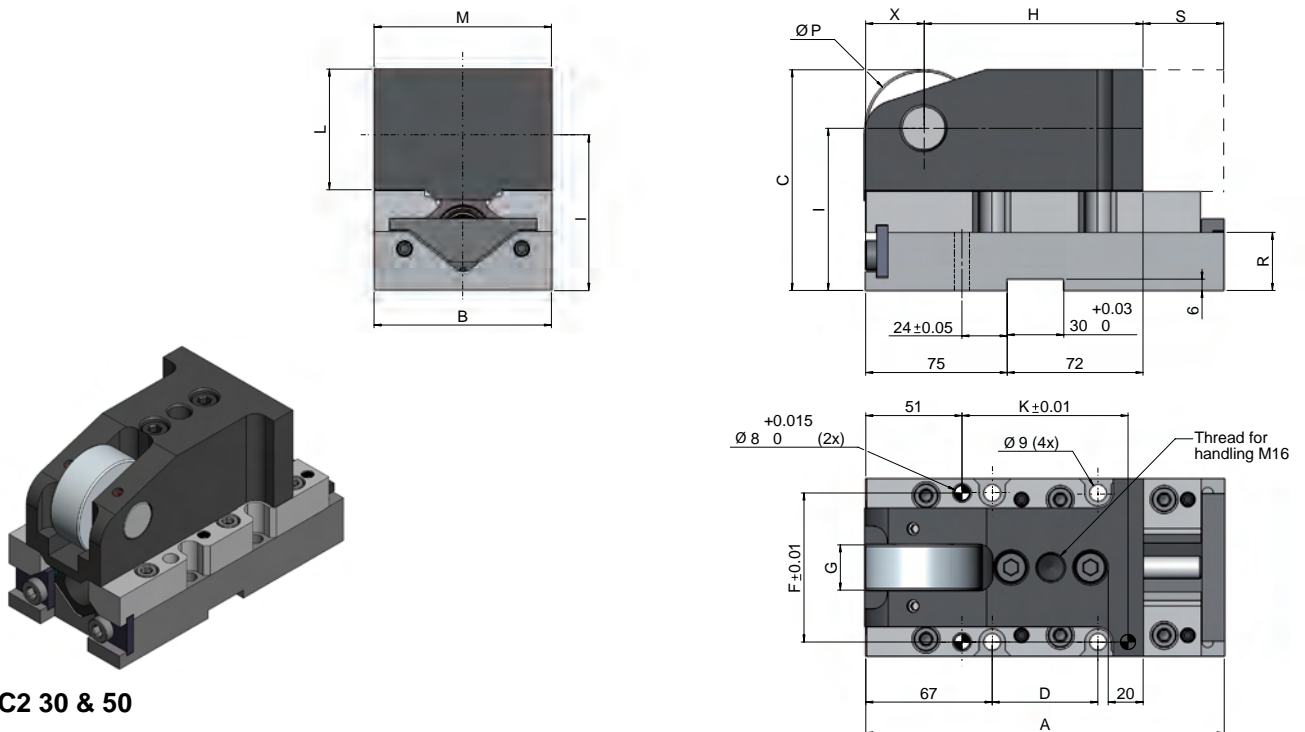
Roller Cam – Sensor Kit

Roller Cam Sensor Kits are an optional accessory to all Roller Cams, providing a signal to the press when the Roller Cam is in start position. The Sensor Kit can easily be attached to the Roller Cam using return stop screw.



Note! For more information, please contact your local distributor or Strömsholmen AB

Dimensions RC2 30 & RC2 50



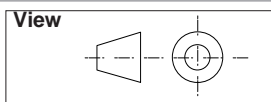
RC2 30 & 50

Volvo Part No.	Order No.	Stroke S (mm)	Nominal force (daN)	Initial return force (daN)	Gas spring	A	B	C	D	F	G	H	I	K	L	M	P	R	X	Max width of the driver
						190	94	117	56	79	25	116	86	88	64	94	62	31	31	
3051608	RC2 30-050	50	3000	200	M2 200	220			86					118						36
3051609	RC2 30-080	80																		
3051610	RC2 50-050	50	5000	350	X 350	190			56					88						36
3051611	RC2 50-080	80				220	120	86	105	29	111	103	118	75	120	72	40	36		
3051612	RC2 50-100	100				240		157	126							120	158			

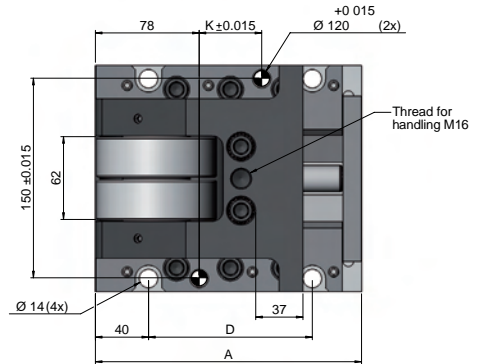
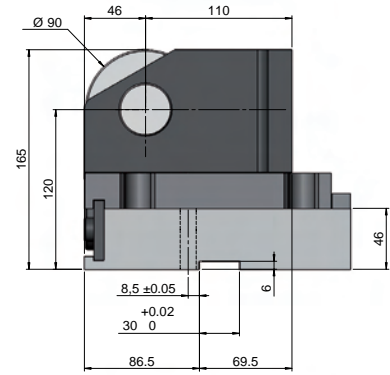
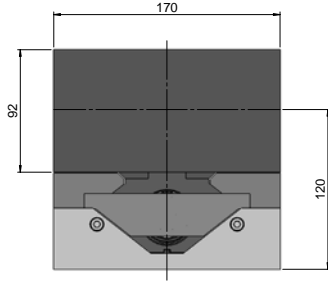
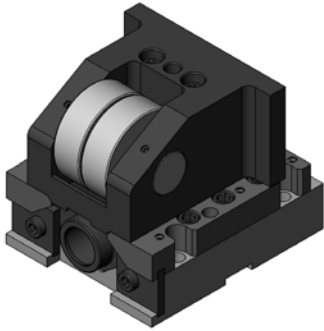
Note! For 2D & 3D CAD downloads, see www.kaller.com

We reserve the right to add, delete or modify components without notification.

All dimensions are stated in mm.
All dimensions are nominal unless tolerance is stated.



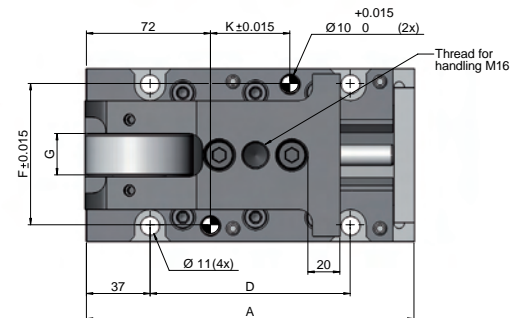
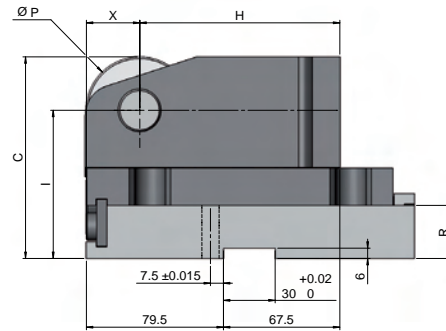
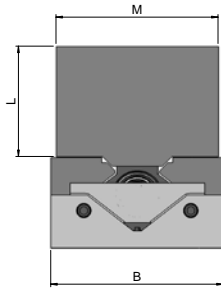
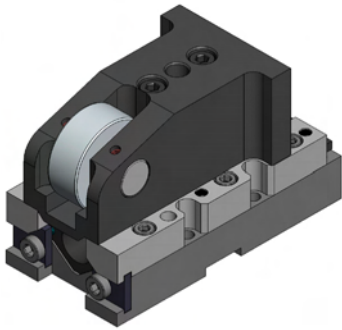
Dimensions RCP2 150



RCP2 150 Dimensions as per PSA standard

Volvo Part No.	Order No	Stroke S (mm)	Nominal force (daN)	Initial return force (daN)	Gas spring	A	D	K	Max width of the driver
3051613	RCP2 150-050	50	15000	500	X 500	200	123	47	62
3051614	RCP2 150-080	80				230	153	77	
3051615	RCP2 150-100	100				250	173	97	

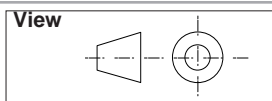
Dimensions RCP2 30 & RCP2 50



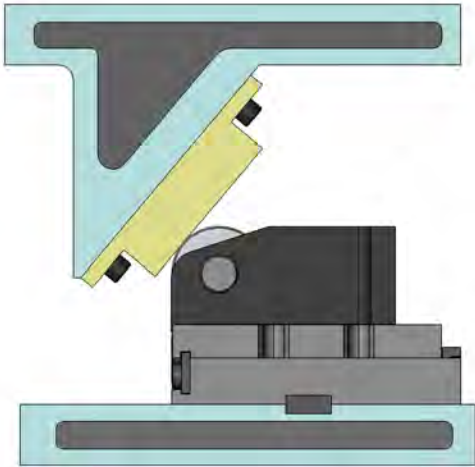
RCP2 30 & 50 Dimensions as per PSA standard

Volvo Part No.	Order No	S Stroke (mm)	Nominal force (daN)	Initial return force (daN)	Gas spring	A	B	C	D	F	G	H	I	K	L	M	P	R	X	Max width of the driver
3054894	RCP2 30-050	50	3000	200	M2 200	190	100	117	116	82	25	116	86	46	64	94	62	31	31	36
3054895	RCP2 30-080	80				220								76						
3054896	RCP2 50-050	50	5000	350	X 350	190	120	140	146	102	29	111	103	46	75	120	72	40	36	
3054897	RCP2 50-080	80				220								76						
3054898	RCP2 50-100	100				240								96						

Note! For 2D & 3D CAD downloads, see www.kaller.com

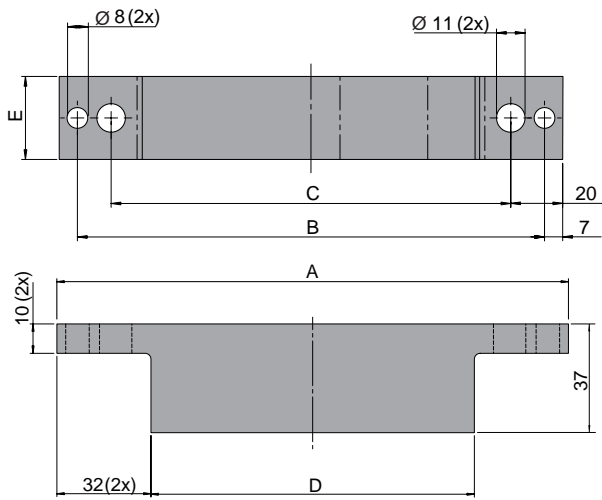


Roller Cam – Driver Plate

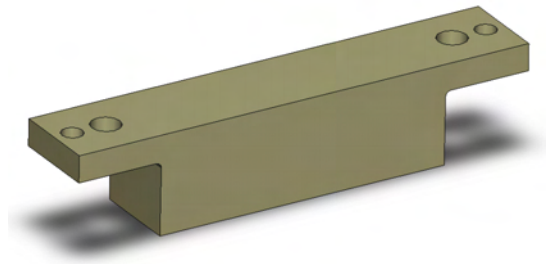


Roller Cam Driver Plates has been designed to simplify the installation of Roller Cams.

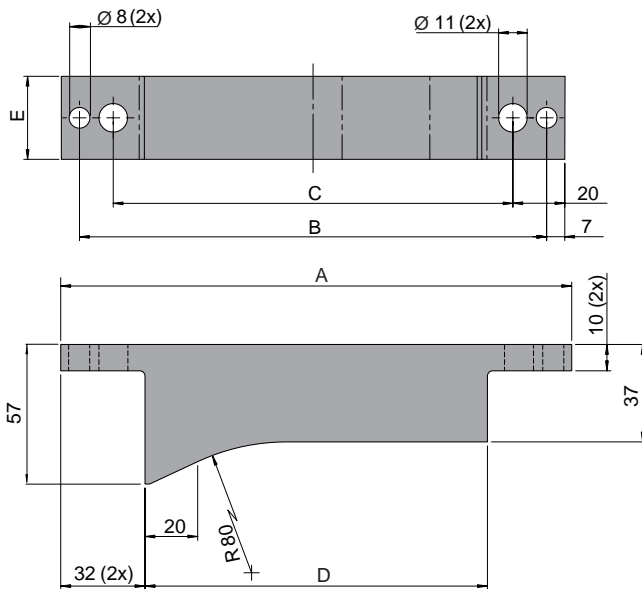
- Ground and hardened contact surface (60 HRC)
- Standardised sizes
- Independent of installation angle



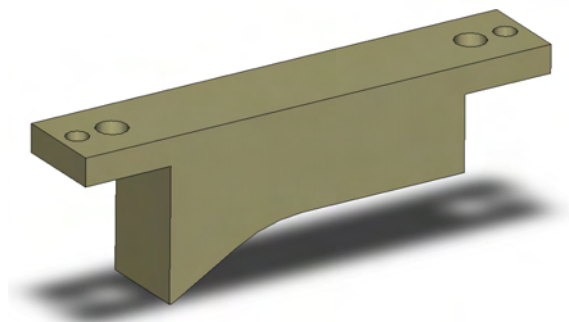
Driver Plate – Flat



Volvo Part No.	Order No.	A	B	C	D	E	Weight [kg]
	3021265-01	174	160	134	110	32	1.16
	3021265-02	264	250	224	200	32	2.00



Driver Plate – Soft Start & Stop



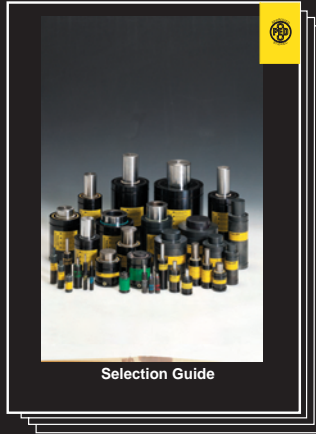
Volvo Part No.	Order No.	A	B	C	D	E	Weight [kg]
3054780	3021570-01	194	180	154	130	32	1.43
3054781	3021570-02	284	270	244	220	32	2.27
3054782	3021570-03	194	180	154	130	65	2.91
3054783	3021570-04	284	270	244	220	65	4.61

We reserve the right to add, delete or modify components without notification.

All dimensions are stated in mm.
All dimensions are nominal unless tolerance is stated.

KALLER®

The Safer Choice



Gas Springs

Kaller developed the first nitrogen gas spring for press tools and today offers a comprehensive selection of high quality gas springs for use in different tool & die applications.



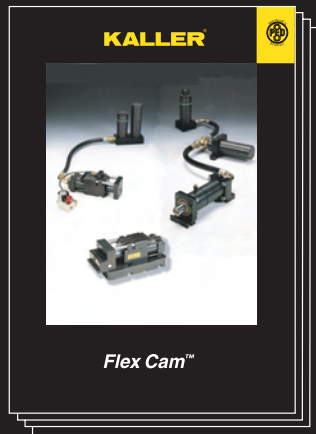
Controllable Gas Springs-KF2

Kaller controllable springs are a family of gas springs, for use in press tools, that can be locked in their bottom position and where the return stroke of the spring can be controlled.



Flange Stripper Unit

Kaller Flange Stripper Unit is used in flanging dies for stripping/lifting a flanged part after forming. It provides 200 daN of stripping force, can be top or bottom mounted and is self guiding.



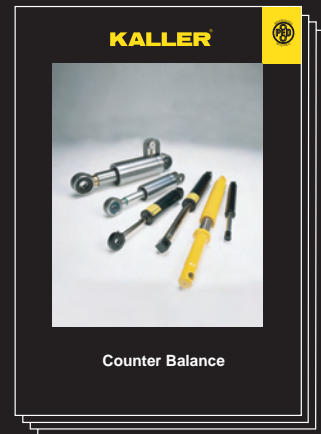
Flex Cam™

The Flex Cam is used for piercing, cutting, forming and flanging operations. The system allows for a flexible distribution of forces with optimal direction and velocity. By using a Flex Cam, fewer tools are required in production.



Roller Cam

Kaller Roller Cam is used for piercing, trimming, flanging and restriking. The Roller Cam can be mounted in both vertical and horizontal angles.



Counter Balance

Kaller Counter Balance gas springs can be used to lift, lower, assist, balance, and hold in a multitude of applications.

KALLER®

Strömsholmen AB

Box 216 • SE-573 23 Tranås

Sweden

Phone +46 140 571 00

info@kaller.com



For more information see our website

www.kaller.com

KALLER®

GAS SPRINGS

USA +1 586 415 6677

Korea +82 31 422 4591

China +86 22 83962995

Mexico +11 5281 81450570