
Product Series
Gas Springs

 **KALLER**[®]
The Safer Choice

Power Line

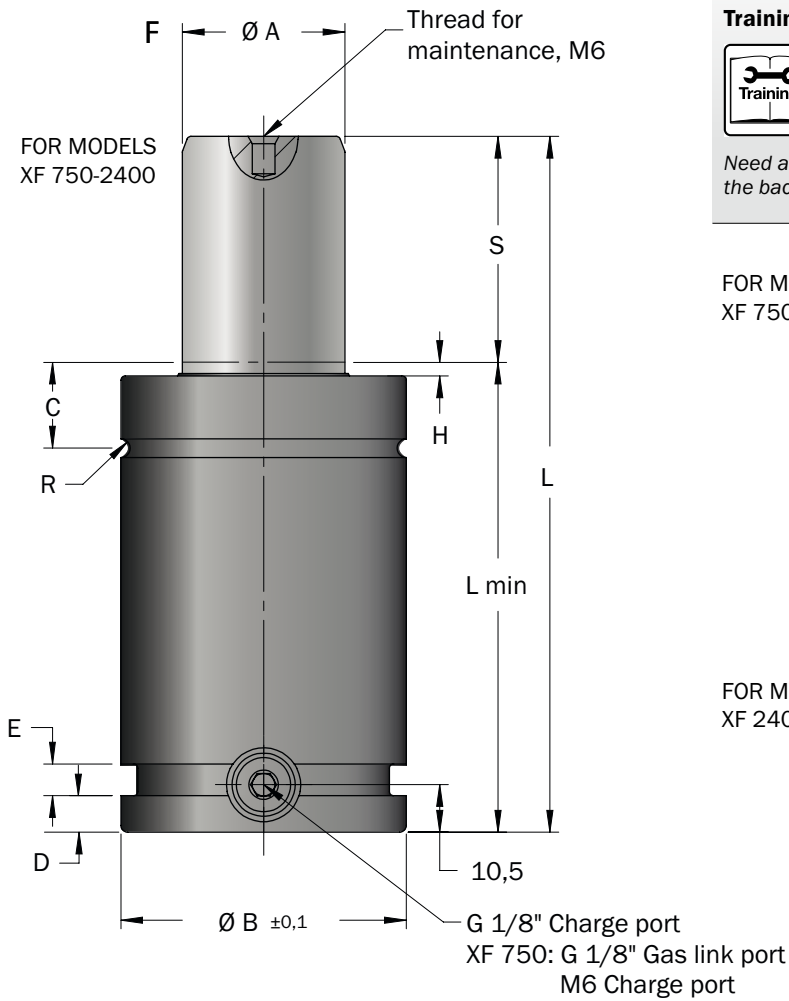
XF 750 – XF 2400



Would you like to order this product?
All available information at kaller.com

By introducing the XF, KALLER offers
a complete range of gas springs according to
the FCA Fiat-Chrysler standard 075.90.60

TECHNICAL FACTS



KALLER - THE SAFER CHOICE

Training



Safety

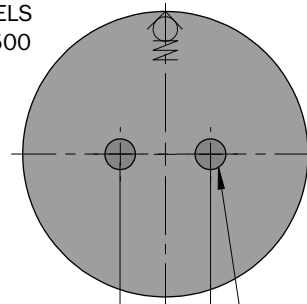


Reliability

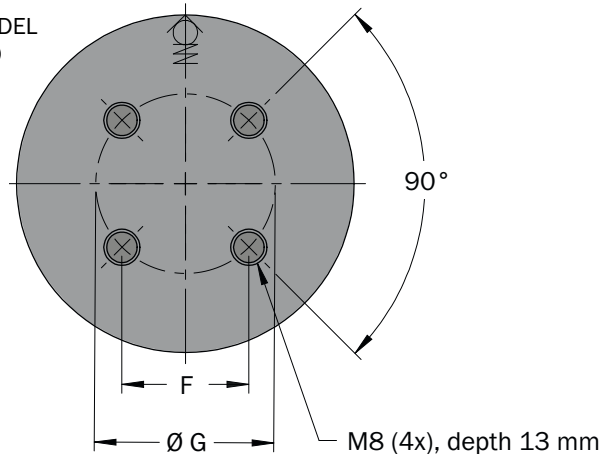


Need additional information on the KALLER features? Look at the back cover of this brochure or at kaller.com.

FOR MODELS XF 750-1500



FOR MODEL XF 2400



Model	Spring force in N at 150 bar/ + 20° C		$\varnothing A$	$\varnothing B$	C	D	E	F	$\varnothing G$	H	R
	Initial	End force *									
XF 750	7,400	12,000	25	45.2	16,5	4	4	20	-	2	1
XF 1000	9,200	14,000	28	50.2	17.5	8	7	20	-	3	2
XF 1500	15,000	24,000	36	63.2	19	8	7	20	-	3	2
XF 2400	24,000	38,000	45	75.2	21	8	7	28.3	40	3	2.5

* at full stroke

Stroke		10	13	16	19	25	32	38	50	63	75	80	100	125
XF 750	L	62	68	74	80	92	106	118	142	168	192	202	242	292
	Lmin	52	55	58	61	67	74	80	92	105	117	122	142	167
XF 1000	L	-	74	80	86	98	112	124	148	174	198	208	248	298
	Lmin	-	61	64	67	73	80	86	98	111	123	128	148	173
XF 1500	L	-	80	86	92	104	118	130	154	180	204	214	254	304
	Lmin	-	67	70	73	79	86	92	104	117	129	134	154	179
XF 2400	L	-	-	87	93	105	119	131	155	181	205	215	255	305
	Lmin	-	-	71	74	80	87	93	105	118	130	135	155	180

FCA COMMODITY CODES STANDARD 075.90.60

kN	FCA Commodity Code	KALLER Order No.
1.7	39-673-0200	X 170-010
	39-673-0201	X 170-015
	39-673-0202	X 170-025
	39-673-0203	X 170-038
	39-673-0204	X 170-050
	39-673-0205	X 170-063
	39-673-0206	X 170-080
	39-673-0207	X 170-100
	39-673-0208	X 170-125
3.5	39-673-0210	X 350-010
	39-673-0211	X 350-013
	39-673-0212	X 350-016
	39-673-0214	X 350-025
	39-673-0215	X 350-038
	39-673-0216	X 350-050
	39-673-0217	X 350-063
	39-673-0218	X 350-080
	39-673-0219	X 350-100
	39-673-0220	X 350-125
	5.0	39-673-0222
39-673-0223		X 500-013
39-673-0224		X 500-016
39-673-0226		X 500-025
39-673-0227		X 500-038
39-673-0228		X 500-050
39-673-0229		X 500-063
39-673-0230		X 500-080
39-673-0231		X 500-100
39-673-0232		X 500-125

kN	FCA Commodity Code	KALLER Order No.	
7.5	39-673-0234	XF 750-013	
	39-673-0235	XF 750-025	
	39-673-0236	XF 750-038	
	39-673-0237	XF 750-050	
	39-673-0238	XF 750-063	
	39-673-0239	XF 750-080	
	39-673-0240	XF 750-100	
	39-673-0241	XF 750-125	
	10	39-673-0242	XF 1000-013
		39-673-0243	XF 1000-025
		39-673-0244	XF 1000-038
39-673-0245		XF 1000-050	
39-673-0246		XF 1000-063	
39-673-0247		XF 1000-080	
39-673-0248		XF 1000-100	
39-673-0249		XF 1000-125	
15		39-673-0251	XF 1500-013
		39-673-0252	XF 1500-025
		39-673-0253	XF 1500-038
	39-673-0254	XF 1500-050	
	39-673-0255	XF 1500-063	
	39-673-0256	XF 1500-080	
	39-673-0257	XF 1500-100	
	39-673-0258	XF 1500-125	
	24	39-673-0260	XF 2400-025
		39-673-0261	XF 2400-038
		39-673-0262	XF 2400-050
39-673-0263		XF 2400-063	
39-673-0264		XF 2400-080	
39-673-0265		XF 2400-100	
39-673-0266		XF 2400-125	

kN	FCA Commodity Code	KALLER Order No.
42	39-673-0268	X 4200-025
	39-673-0269	X 4200-038
	39-673-0270	X 4200-050
	39-673-0271	X 4200-063
	39-673-0272	X 4200-080
	39-673-0273	X 4200-100
	39-673-0274	X 4200-125
	66	39-673-0276
39-673-0277		X 6600-038
39-673-0278		X 6600-050
39-673-0279		X 6600-063
39-673-0280		X 6600-080
39-673-0281		X 6600-100
39-673-0282		X 6600-125
95		39-673-0284
	39-673-0285	X 9500-038
	39-673-0286	X 9500-050
	39-673-0287	X 9500-063
	39-673-0288	X 9500-080
	39-673-0289	X 9500-100
	39-673-0290	X 9500-125
	199	39-673-0292
39-673-0293		X 20000-038
39-673-0294		X 20000-050
39-673-0295		X 20000-063
39-673-0296		X 20000-080
39-673-0297		X 20000-100
39-673-0298		X 20000-125

PERFORMANCE AND DESIGN FEATURES

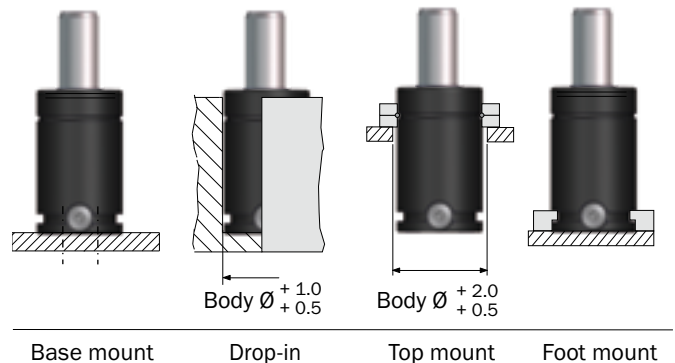
- Initial forces from 7,400 to 24,000 N
- Side charging ports for hose system connection
- Upper C-groove, lower U-groove and bottom threaded holes allow for various standard mounting possibilities

BASIC INFORMATION

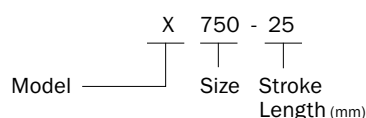
Pressure medium	Nitrogen
Max. charge pressure	150 bar (at 20 ° C)
Min. charge pressure	25 bar (at 20 ° C)
Operating temperature	0 to +80 ° C
Force increase by temperature	0.3%/° C
Recommended max strokes/min	~ 25 -100 (at 20 ° C)
Max. piston rod velocity	1.6 m/s
Repair Kit XF 750	3019903
Repair Kit XF 1000	3018847
Repair Kit XF 1500	3020434
Repair Kit XF 2400	3018848

Note! See KALLER main catalog for further information.

MOUNTING POSSIBILITIES



HOW TO ORDER



The Safer Choice

Introduced in 1983, the KALLER gas spring technology quickly led to worldwide demand. The Safer Choice - Training, Safety and Reliability - has always been a KALLER top priority for providing the safer working environment. We recommend looking through all available KALLER features when selecting gas springs and gas or hose linked systems.



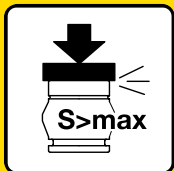
KALLER Training Program

TRAINING. Without doubt the KALLER Training Program is the best and most creative way to fully understand and appreciate the importance of the safety and reliability features.



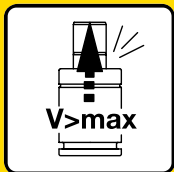
KALLER Safety App

SAFETY. Fake or KALLER original? With the KALLER Safety App you can identify and verify your specific KALLER gas springs.



Overstroke Protection System

SAFETY. When a gas spring is overstroked, this helps reduce the risk of tool damage or injury.



Overload Protection System

SAFETY. Jammed cam or tool part being forced by gas springs? This will help reducing such risks.



Overpressure Protection System

SAFETY. Vents the spring if the internal gas pressure exceeds the maximum allowable limit to prevent accidents.



PED approved for 2 million strokes

RELIABILITY. Our 2 million stroke PED approval ensures safer component cycle life.



Flex Guide™ System

RELIABILITY. Prolongs service life, allows more strokes per minute, and offers greater tolerance to lateral tool movements.



Dual Seal™ Link Systems

RELIABILITY. Fewer production interruptions due to leakage caused by vibration. Simplified installation thanks to the non-rotation feature.